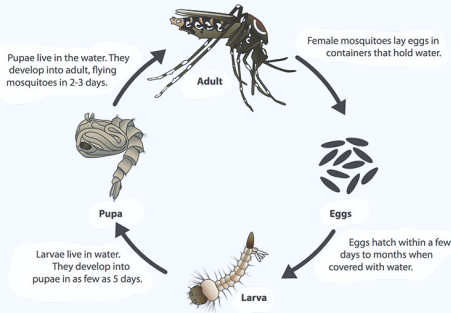


NEWSLETTER

BELIEVE IT OR NOT

Finally, the mosquitoes aren't biting, but they simply do not die off during the colder months.

Some mosquitoes may overwinter as adults, hibernating in hollow logs, barns, basements, etc. While others can overwinter in a immature life stage. Once temperatures begin to fall below 50° adults begin to prepare by hibernating or laying eggs. The last surviving adult females will lay a batch of eggs in water-holding containers.



The eggs will enter a state of diapause, a process that postpones their life cycle stages during the coldest months. When the water thaws and warms to the right temperature the eggs will hatch. Just like summer months, it is important to take the proper steps to eliminate egg habitats in the fall and winter. Inspecting property and removing any water-holding container will reduce mosquito population immensely.

West Nile virus is a concern in Goshen county and GCWP's goal is to build awareness and eliminate habitat for disease-carrying mosquitoes. *Does the virus die with the adults?* It could be possible for infected females to lay some eggs that survive the winter and emerge as virus-carrying adults the following spring. Reducing mosquito habitat in the fall, spring and summer lowers the risk of West Nile virus spreading throughout communities.

Join us for the January newsletter and learn about the Weed & Pest mosquito program!



APPLICATOR LICENSE FOR 2021

"How can I renew or receive my applicator license for 2021?"

Even with all the changes this year, it is still possible to renew or obtain your applicator license. The Dept. of Agriculture and University of Wyoming have updated the requirements and are now offering the courses online. Both commercial and private applicator manuals, workbooks, and testing will be offered virtually. The program provides Continuing Education Units (CEUs) in order for you to maintain a valid applicator license.

The **commercial** applicator license is required to apply general or restricted-use pesticide and receive payment for application on others property. Along with having to be certified in one or more categories. If your *commercial applicator* license expires in 2021 there are CEU opportunities available for renewal.

- 24 CEU hours are required for renewal (prior to exp. date)
- 12 CEU hours will be offered virtually on December 15-16
- Program registration fee is \$60

Visit uwyoextension.org/psep/ to register and learn more on the new changes to this program. This website has step by step instructions for renewal, training materials and exams. To obtain your commercial license call your local UW Extension office for a proctored test, note Covid-19 has changed previous routines.

Questions on applicator licensing or difficulties accessing the website please contact your local UW Extension.

The **private** applicator license allows you to purchase restricted-use pesticides to treat your own property. A private applicator cannot charge to apply on another individuals property.

With online access to the core manual, workbook and license application, applicators can now obtain their license from home. The finished workbook and application can be submitted via email or postal service to the Wyoming Dept. of Ag.

All appropriate materials to complete and become certified is offered online at:

uwyoextension.org/psep/private-applicators/licensing/

STAY IN THE KNOW

- Office closure: Christmas & New Years
- Prairie dog bait available Oct 1 - March 15

